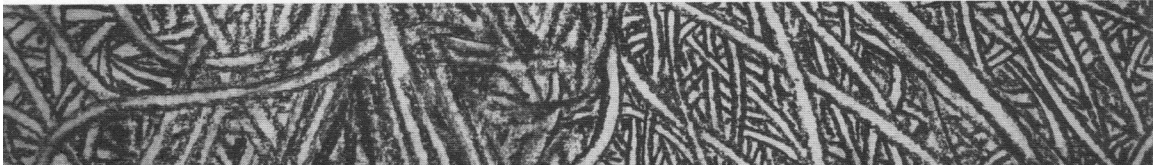


[art faculty: *special projects*]



[public opening reception . sunday february 22 2004 . 1 to 4 o'clock pm]

**Western Gallery** Western Washington University

[art faculty: special projects] **january 12 to march 6, 2004**

The Department of Art's biennial exhibition clearly demonstrates its mission to "create an interdisciplinary environment." Although easily at home in this university setting where critiques on any historical and/or contemporary subject are the daily discourse, the department's artists also take time to explore ways to visually and creatively communicate personal reflections and social responsibility. As artists they investigate other fields without dissolving their expertise in their own area. As part of an ever widening "one-second blip" culture, they sharpen our observation skills and refocus our routine driven minds.

- Sarah Clark-Langager, Gallery Director

cover:

[cara jaye *knot*]  
charcoal on paper 2003

gallery hours:

mon-friday **10am - 4pm**

except wed **10am - 8pm**

sat **10am - 4pm**

director's office **650-3963**

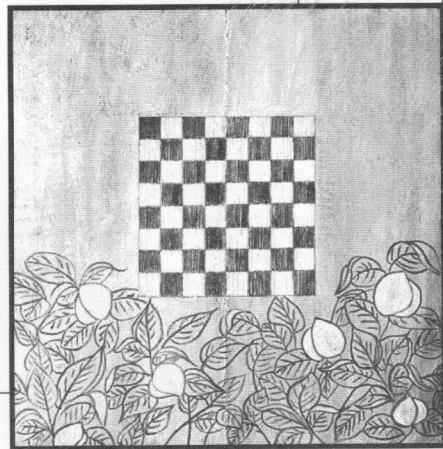
info line **650-3900**



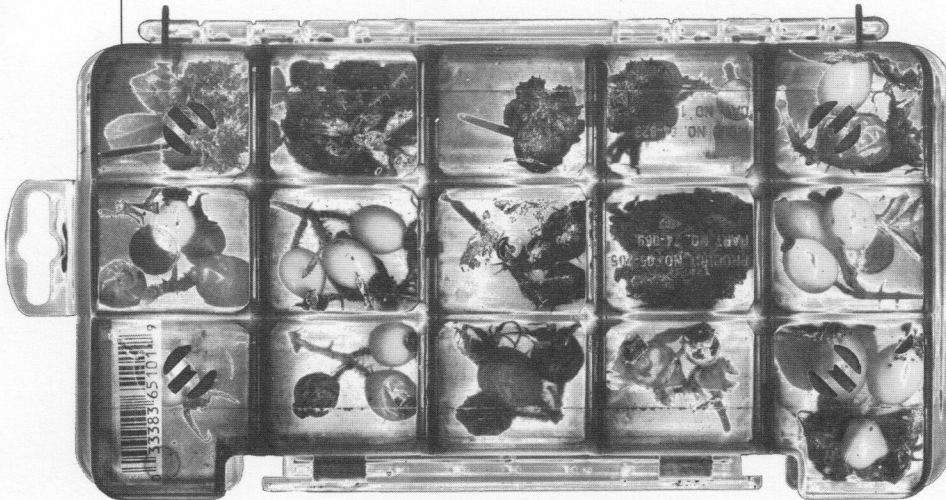
[garth amundson *pillow thoughts*]  
detail mixed media cyanotype embroidery 17.5" x 26" 2003



[sebastian mendes *nostalgia 2*]  
exhibited at the university of arkansas  
*little rock 2003*  
photo: george chambers



[sharron antholt *orchard*]  
fresco 20" x 20" 2003



[madge gleeson *inventory*]

[elsi vassdal-ellis icarus]  
 icarus is confronted by genocide and democide.  
 letterpress printed book; accordion binding. edition: 60 2003

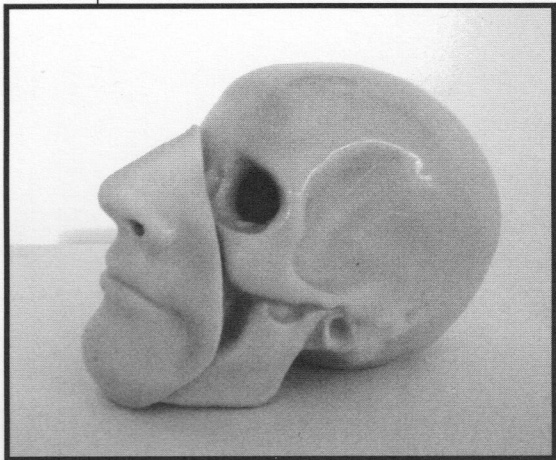
guilty conceal the truth. But there are too many dead. They are everywhere. The earth can't conceal

have seen the end of war.

When to begin with Rwanda? When to begin with Rwanda? The power of myth was used once again against citizens who most of the time wouldn't have looked for corpses in all cases if a man or woman was a Hutu or Tutsi, without their identification card is by product of Belgian colonialists. On April 6, 1994, President Juvénal Habyarimana's airplane fell out of the sky over Kigali. Rwanda's president and his wife were shot down. Rwanda's president and his wife were shot down. Rwanda's president and his wife were shot down.

When to begin with Rwanda? When to begin with Rwanda? The power of myth was used once again against citizens who most of the time wouldn't have looked for corpses in all cases if a man or woman was a Hutu or Tutsi, without their identification card is by product of Belgian colonialists. On April 6, 1994, President Juvénal Habyarimana's airplane fell out of the sky over Kigali. Rwanda's president and his wife were shot down. Rwanda's president and his wife were shot down. Rwanda's president and his wife were shot down.

When to begin with Rwanda? When to begin with Rwanda? The power of myth was used once again against citizens who most of the time wouldn't have looked for corpses in all cases if a man or woman was a Hutu or Tutsi, without their identification card is by product of Belgian colonialists. On April 6, 1994, President Juvénal Habyarimana's airplane fell out of the sky over Kigali. Rwanda's president and his wife were shot down. Rwanda's president and his wife were shot down. Rwanda's president and his wife were shot down.



[patrick mccormick *past/present/future*]  
 porcelain "life size"

gallery talks

wednesdays at noon in the  
 Western Gallery

- january 14 sharon antholt
- january 21 sebastian mendes
- january 28 garth amundson
- february 04 thomas johnston
- february 11 ed bereal

other participating faculty  
 cristina de almeida  
 kent smith  
 robert urso

*[Department of Art]*  
*Western Washington University*  
516 High Street  
Bellingham, WA 98225-9068

NON-PROFIT  
U.S. POSTAGE PAID  
WESTERN WASHINGTON  
UNIVERSITY

design : *jaime barrett*

<http://WESTERNGALLERY.WWU.EDU>