

WESTERN WASHINGTON UNIVERSITY WESTERN GALLERY

Sarah
Clark-Langager
Director
Western Gallery
Western Washington
University
Bellingham, WA
98225
(360) 650-3900

Current Exhibits

.....
Outdoor Sculpture
Collection
.....

.....
College of Fine and
Performing Arts
.....

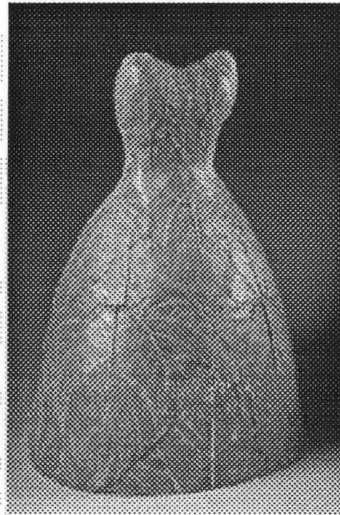
.....
Questions and
comments
.....

Information
(360) 650-3900

Botanica: Contemporary Art and the World of Plants

October 8 - Dec. 1,
2001

This exhibition explores the creative intersection between botanical life systems and the visual arts. Plant life serves as a point of departure and as a metaphor for many of the artists in this exhibition, which includes multi-media installations, photography, painting, and live plant material as sculptural forms. For example, artists such as Kiki Smith and Roberto Juarez have entered into a dialogue about the correspondence between botanical processes and the language of artistic creation.



Leslie Fry, Leaf Dress, 1997
plaster and oil paint, 24 x 17 x 14"
Courtesy of the artist and the Tweed
Museum of Art, Univ. MN, Duluth



Alex Rockman, *Dangerous Liaisons*,
1999, oil on canvas, 110 x 60"

Courtesy of the artist, Gorney-Bravin-Lee,
New York, and Tweed Museum of Art,
Univ. MN, Duluth

The works of such artists as Mel Chin, Alan Sonfist and Meg Webster refer to the practices of horticulture, natural history and environmentalism, while still others reference specific historical constructions about the significance of botanical life forms to different cultures. This large exhibition of 70 works was organized by the Tweed Museum of Art, University of Minnesota, Duluth,

with the Western Gallery as the only west coast venue. Educational programming is planned. Closed Thanksgiving holidays.

Faculty Review/Preview

January 7- 31, 2002

In a variety of traditional and new media, faculty from the Department of Art present a selection of works exploring contemporary attitudes and individual areas of research. This is an opportunity to see their ongoing series and/or preliminary studies for totally different concerns. Closed Martin Luther King Day, Monday, Jan. 21st.

Pressure Points

February 11 - March 22, 2002

A wide range of contemporary prints by artists from the Northwest to the East Coast explore multiple processes in major themes such as the conceptual arrangement of visual clues; the construction of an identity through

autobiographical details and new personal effects; the reflection of contemporary popular culture in traditional and new formats; the provocation of society through strong, visual comments; and the visual translation of the world through single words and/or mixed messages. Selections from the Jordan and Mina Schnitzer Foundation (Portland) and with curatorial assistance from The Art Gym (Marylhurst University) and Hallie Ford Museum (Willamette University), Oregon. Closed President's Day Weekend, Feb. 16-18th.

April 2-20, 2002

Continuing in north gallery, a rearrangement of *Pressure Points*, including new selections from the Foundation

Chester Arnold: Paintings

April 8-June 8, 2002 (south gallery)

Not your ordinary realist, this Bay area painter depicts our contemporary world on the edge of catastrophe. Distant events impinge on our daily lives. In these haunting and mysterious paintings, private vision (memory, dread, fantasy) seems to collide with unconfirmable public reports. Since earning his MFA from the San Francisco Art Institute in the mid eighties, Arnold has consistently shown his work in solo and group exhibitions in California and New York City. *Closed Memorial Day weekend.*

April 29-June 8 (north gallery)

Schedule is tentative at this time.

Western Gallery | Sculpture Collection | Art Department |
College of Fine and Performing Arts